



Superior Clamping and Gripping



Product Information

Manual change system SHS

Flexible. Compact. Intuitive.

Manual change system SHS

Manual tool change system with integrated air feed-through, locking monitoring, and optional electric feed-through.

Field of application

Excellently suitable for use in the flexible production of products with a comprehensive range of variants in which reliable manual changes are required.

Advantages – Your benefits

Series with six unit sizes for optimal size selection and a broad application range

Integrated pneumatic feed-through for a safe power supply of the handling modules and tools

The locking lever is opened sideways this allows the changer to be easily operated even in confined spaces

Optional locking and presence monitoring thus increased process reliability

Wide range of electric, pneumatic, and fluid modules for universal energy transmission possibilities

ISO mounting pattern for easy assembly to most types of robots without needing additional adapter plates



Sizes
Quantity: 6



Handling weight
9 .. 58 kg



Moment load M_x
15 .. 320 Nm

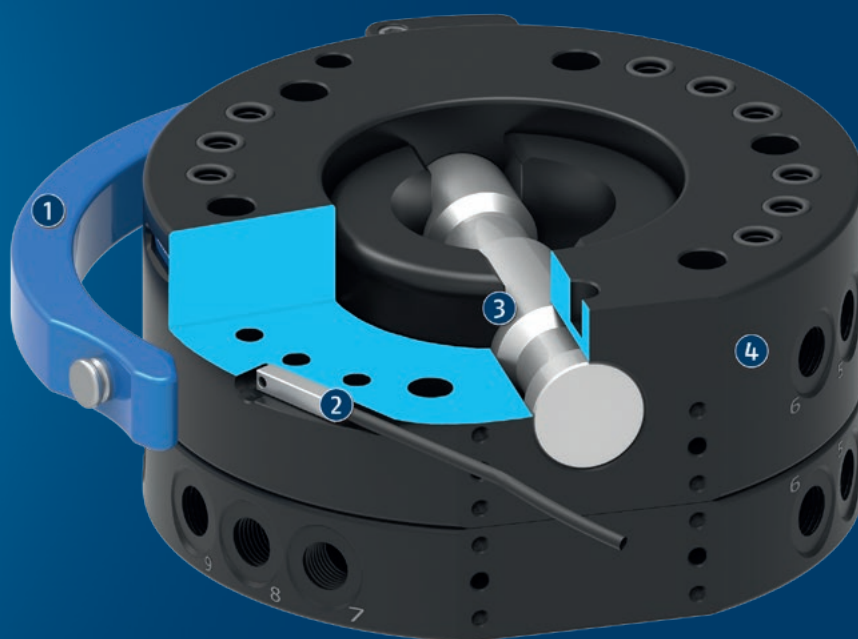


Moment load M_z
25 .. 775 Nm

Functional description

The manual change system (SHS) consists of a manual change head (SHK) and a manual change adapter (SHA). The manual change head (SHK) is form-fit locked with the manual change adapter (SHA), and due to the patented

locking it is free from play. A pin is pushed forward or backward via a locking lever for locking or unlocking. An integrated pneumatic feed-through supplies the tool with energy.



① **Locking lever**
for manual actuation

② **Lock sensing**
optional, for process-reliable monitoring of the locking condition

③ **Locking bolt**
made of corrosion-free steel for easy and secure locking

④ **Air feed-through**
without interfering contours due to the integration into the housing. Also suitable for vacuum.

General notes about the series

Actuation: Manual via locking lever

Operating principle: by turning the locking lever, the head and adapter are locked and unlocked.

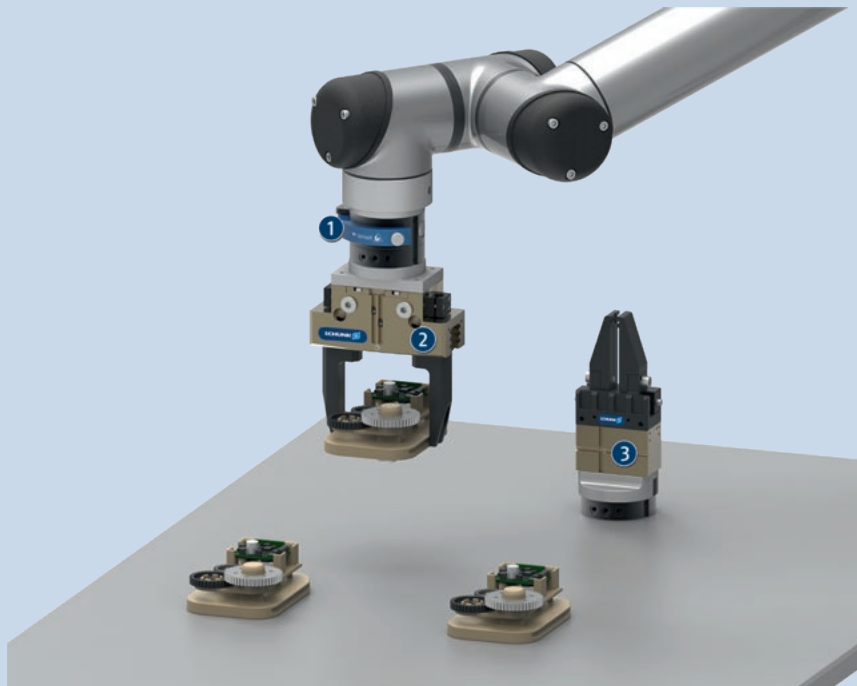
Energy transmission: Optional via electrical modules and/or fluid modules. Pneumatic feed-through already integrated.

Housing: The housing consists of high-strength, hard-coated aluminum alloy. The functional components are made of hardened steel.

Warranty: 24 months

Harsh environmental conditions: Please note that use under harsh environmental conditions (e.g. in the coolant area, cast and grinding dust) can considerably reduce the service life of the units, and we will not take over any warranty. However, in many cases we can find a solution. Please contact us for assistance.

Handling weight: is the weight of the total load attached to the flange. When designing, the permissible forces and moments have to be paid attention to. Please note that exceeding the recommended handling weight will shorten the lifespan.



Application example

Handling tool with manual tool change system for gripping of middle and small parts.

- ① Manual change system SHS
- ② 2-finger parallel gripper PGN-plus-P with customized gripper fingers
- ③ 2-finger parallel gripper MPG-plus with customized gripper fingers

SCHUNK offers more ...

The following components make the product SHS even more productive – the suitable addition for the highest functionality, flexibility, reliability, and controlled production.



Rotary feed-through



Compensation unit



Anti-collision and overload protection sensor



Universal gripper



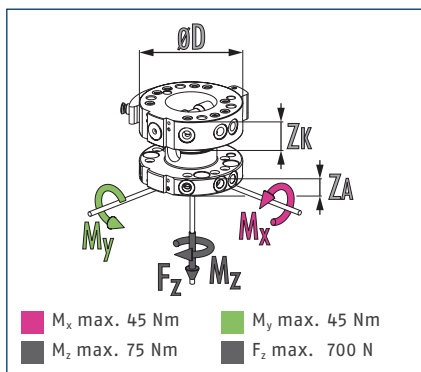
Inductive proximity switches



Electronic module

① For more information on these products can be found on the following product pages or at schunk.com. Please contact us: SCHUNK technical hotline +49-7133-103-2696

Dimensions and maximum loads



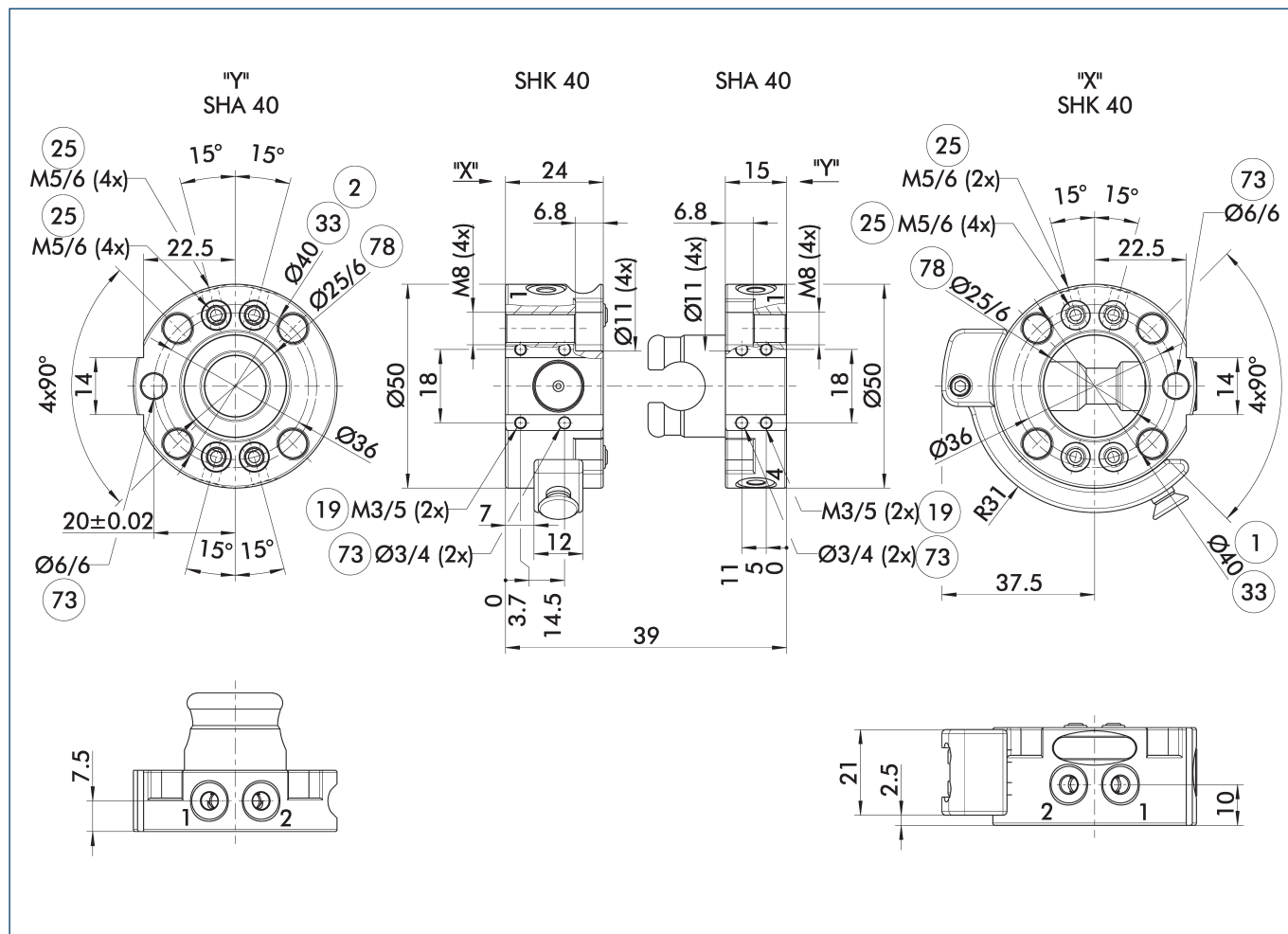
ⓘ This is the max. sum of all forces and moments which are permitted to act on the change system for ensuring proper functioning.

Technical data

Description		SHK-040-000-000	SHA-040-000-000
		Manual change head	Manual change adapter
ID		0310400	0310401
Recommended handling weight	[kg]	9	9
Lock sensing		optionally via attachment kit	
Repeat accuracy	[mm]	0.02	0.02
Weight	[kg]	0.14	0.075
Max. distance when locking	[mm]	1	1
Number of pneumatic feed-throughs		4	4
Feed-throughs for radial use		2	4
Pitch circle diameter	[mm]	40	40
Connection flange according to		ISO 9409-1-40-4-M6	
Min./max. ambient temperature	[°C]	5/60	5/60
Dimensions Ø D x Z*	[mm]	50 x 24	50 x 15
Screw connection diagram		S5/S7 via adapter plate	S5/S7 via adapter plate

* Please note that the heights of the change master (ZK) and change adapter (ZA) differ. The sum represents the total height of a coupled change system.

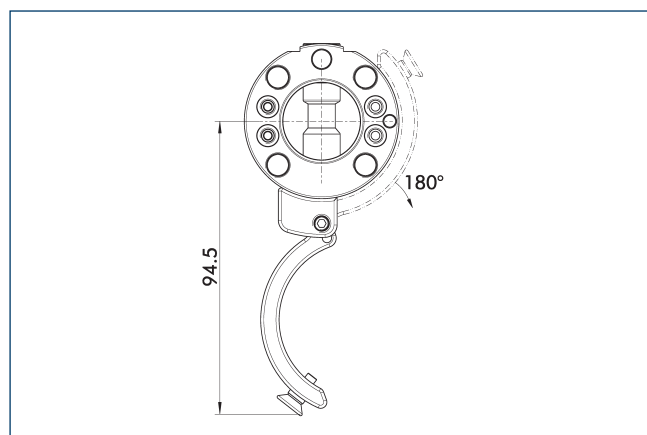
Main view



The main view shows the unit in its basic version.

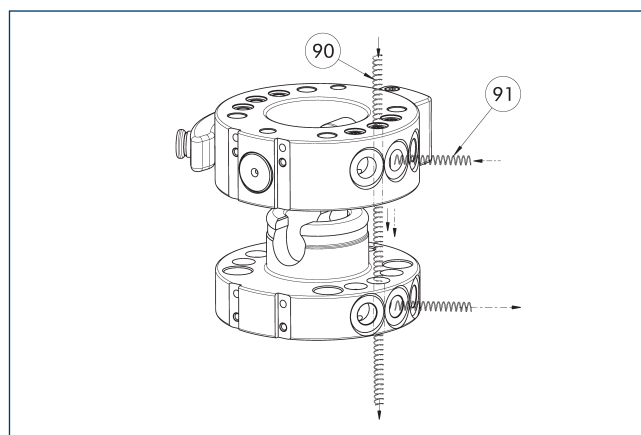
- | | |
|---------------------------------|-----------------------------|
| ① Robot-side connection | ③③ DIN ISO-9409 bolt circle |
| ② Tool-side connection | ⑦③ Fit for centering pins |
| ①⑨ Mounting surface for options | ⑦⑧ Fit for centering |
| ②⑤ Pneumatic feed-throughs | |

Interference Contour when locking/unlocking



The drawing shows the interfering contour when locking and unlocking. The specified values may vary depending on the opening angle of the locking lever.

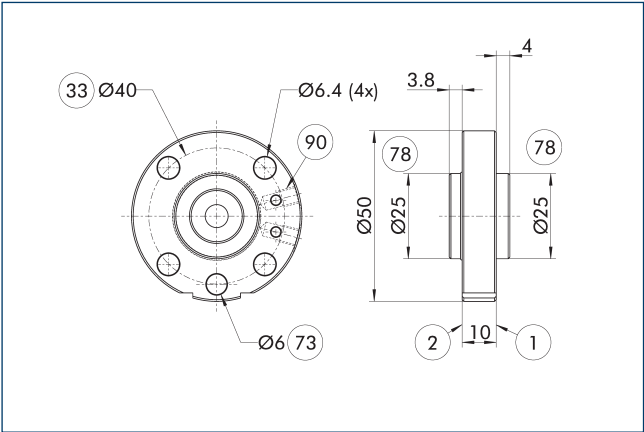
Pneumatic feed-through



- | | |
|-----------------------|------------------------|
| ⑨⑨ Feed-through axial | ⑨① Feed-through radial |
|-----------------------|------------------------|

The changing system has pneumatic feed-throughs. They can be used hose-free via the adapter plate (axial) or with a hose (radial). Some of the feed-throughs can be used axially.

Adapter plate ISO-A040-P-radial



- 1

Robot-side connection
- 2

Tool-side connection
- 33

DIN ISO-9409 bolt circle
- 73

Fit for centering pins
- 78

Fit for centering
- 90

Connections for radial air feed-through

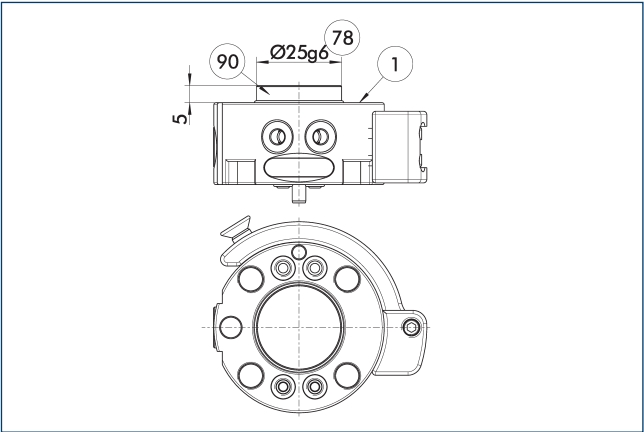
Robot side adapter plate

Description	ID	
Robot side		
A-SHK-040-P-RADIAL	1391534	

- 1

Adapter plate with radial air connections for using the integrated axial air connections of the SHK.

Centering disc for SHK



- 1

Robot-side connection
- 78

Fit for centering
- 90

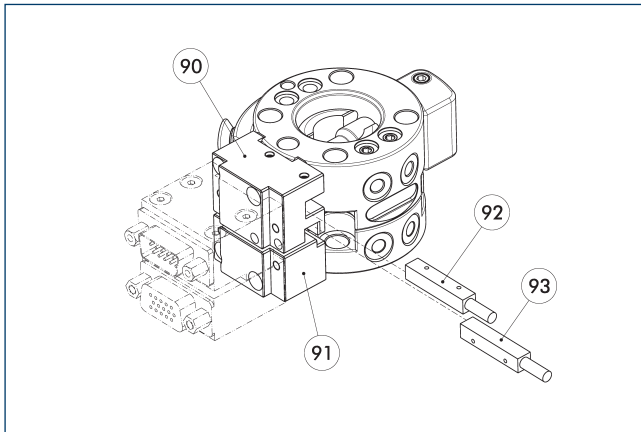
Centring disc

Description	ID	
Centering disc		
A-HWK-040-BOSS	0302742	

- 1

Serves as a fitting collar for centering on mechanical interfaces, e. g. on the robot.

Accessories

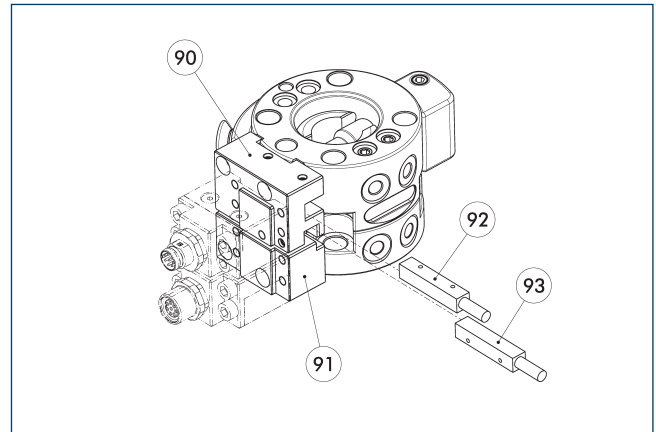


- 90 Robot side adapter plate 92 Locking sensor
 91 Tool side adapter plate 93 Tool side presence sensor

Description	ID	Description
Robot side		
SHK-040-AK0-S7	1304690	Adapter plate
Tool side		
SHA-040-AK0-S7	1304691	Adapter plate
Inductive proximity switches		
IN 5-S-M12	0301569	
IN 5-S-M8	0301469	
Signal feed-through module		
SW0-A15-A	9936356	
SW0-A15-K	9936357	
SW0-E10-011-A	9935802	
SW0-E10-011-K	9935801	
SW0-E20-011-A	9936526	
SW0-E20-011-K	9936525	
SW0-EM8-011-A	9966154	
SW0-EM8-011-K	9966153	

① A change system with adapter plate or feed-through module are optionally available, and can be ordered as a complete assembly group. Please contact us for assistance.

Accessories

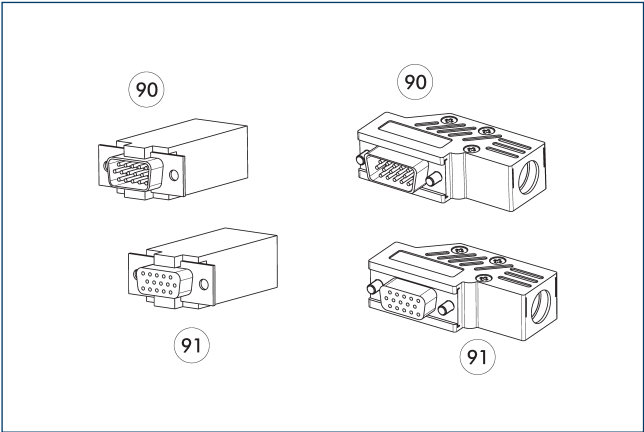


- 90 Robot side adapter plate 92 Locking sensor
 91 Tool side adapter plate 93 Tool side presence sensor

Description	ID	Description
Robot side		
SHK-040-AK0-S5	1304684	Adapter plate
Tool side		
SHA-040-AK0-S5	1304688	Adapter plate
Inductive proximity switches		
IN 5-S-M12	0301569	
IN 5-S-M8	0301469	
Signal feed-through module		
SW0-B15-A	9937327	
SW0-B15-K	9937326	
SW0-E10-005-A	9935800	
SW0-E10-005-K	9935799	
SW0-E2A-A	9941290	
SW0-E2A-K	9941289	
SW0-E3A-A	9941632	
SW0-E3A-K	9941631	
SW0-EM8-005-A	9966151	
SW0-EM8-005-K	9966150	

① A change system with adapter plate or feed-through module are optionally available, and can be ordered as a complete assembly group. Please contact us for assistance.

Cable connector



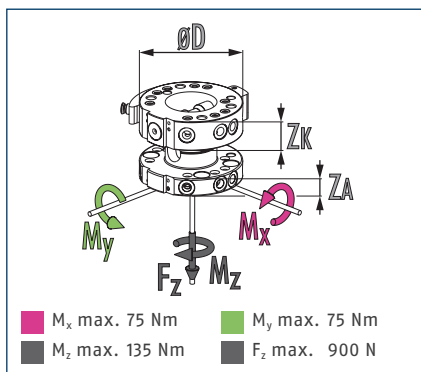
90 D-sub connecting plug

91 D-sub connector

Description	ID	
Angled cable connector, robot-side		
KAS-A15-K-90	0301301	
Angled cable connector, tool-side		
KAS-A15-A-90	0301302	
Straight cable connector, robot-side		
KAS-A15-K-0	0301264	
Straight cable connector, tool-side		
KAS-A15-A-0	0301265	

For more detailed information and other cable connectors, see catalog chapter "Options" or visit our website.

Dimensions and maximum loads



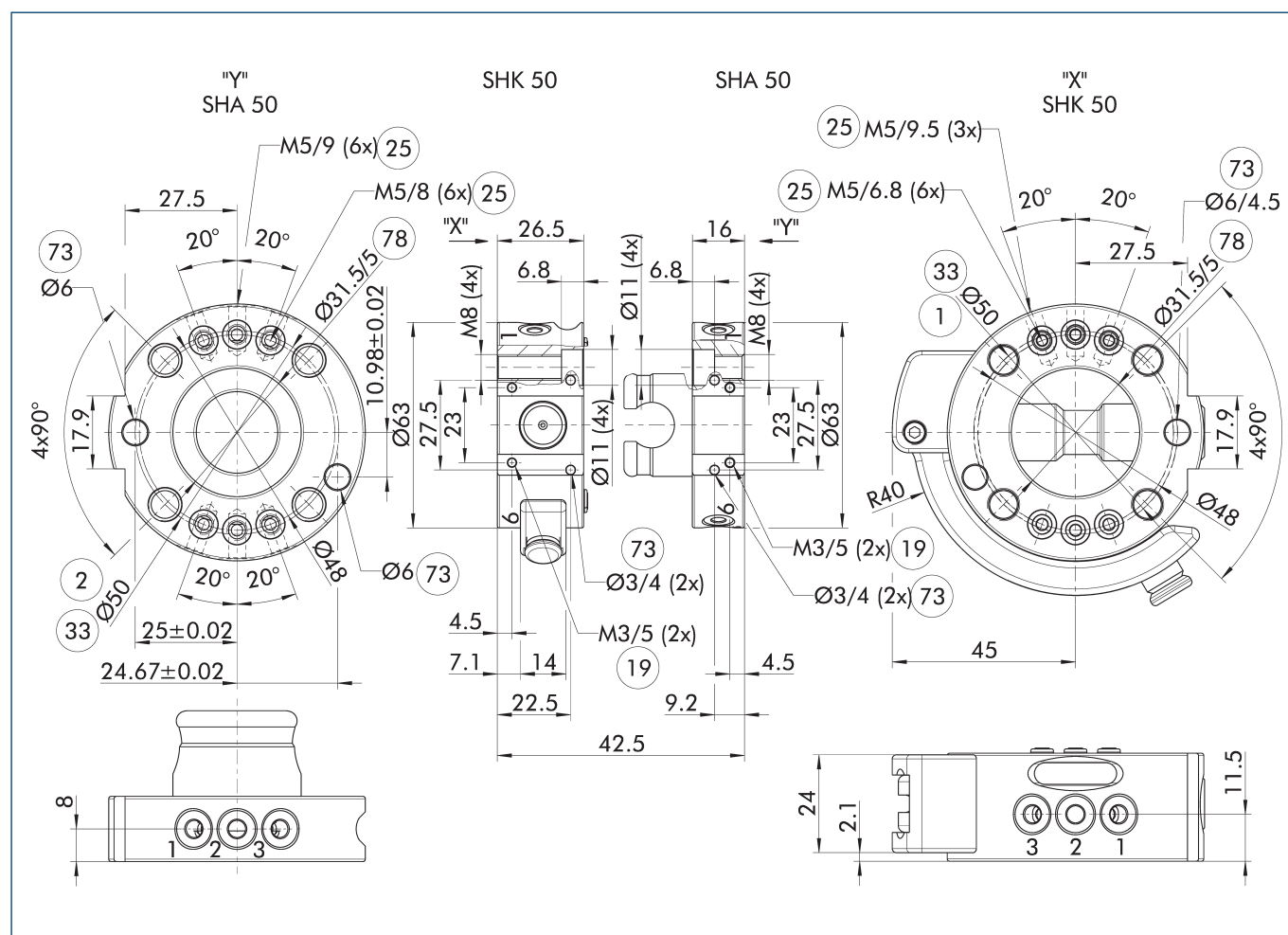
ⓘ This is the max. sum of all forces and moments which are permitted to act on the change system for ensuring proper functioning.

Technical data

Description		SHK-050-000-000	SHA-050-000-000
		Manual change head	Manual change adapter
ID		0310410	0310411
Recommended handling weight	[kg]	11	11
Lock sensing		optionally via attachment kit	
Repeat accuracy	[mm]	0.02	0.02
Weight	[kg]	0.25	0.1
Max. distance when locking	[mm]	1	1
Number of pneumatic feed-throughs		6	6
Feed-throughs for radial use		3	6
Pitch circle diameter	[mm]	50	50
Connection flange according to		ISO 9409-1-50-4-M6	
Min./max. ambient temperature	[°C]	5/60	5/60
Dimensions Ø D x Z*	[mm]	63 x 26.5	63 x 16
Screw connection diagram		S5/S7 via adapter plate	S5/S7 via adapter plate

* Please note that the heights of the change master (ZK) and change adapter (ZA) differ. The sum represents the total height of a coupled change system.

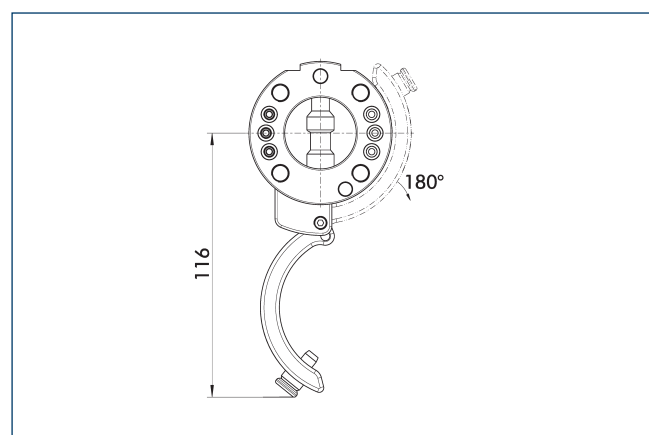
Main view



The main view shows the unit in its basic version.

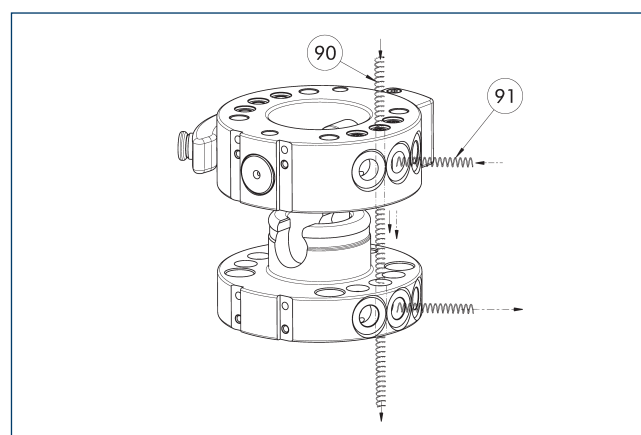
- | | |
|---------------------------------|-----------------------------|
| ① Robot-side connection | ③③ DIN ISO-9409 bolt circle |
| ② Tool-side connection | ⑦③ Fit for centering pins |
| ①⑨ Mounting surface for options | ⑦⑧ Fit for centering |
| ②⑤ Pneumatic feed-throughs | |

Interference Contour when locking/unlocking



The drawing shows the interfering contour when locking and unlocking. The specified values may vary depending on the opening angle of the locking lever.

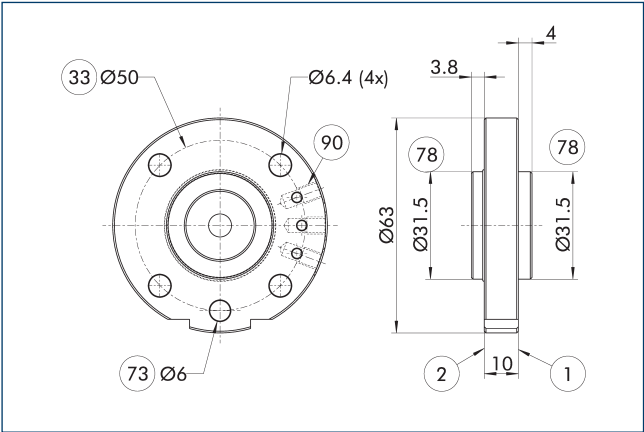
Pneumatic feed-through



- | | |
|-----------------------|------------------------|
| ⑨⑨ Feed-through axial | ⑨① Feed-through radial |
|-----------------------|------------------------|

The changing system has pneumatic feed-throughs. They can be used hose-free via the adapter plate (axial) or with a hose (radial). Some of the feed-throughs can be used axially.

Adapter plate ISO-A050-P-radial



- 1

Robot-side connection
- 2

Tool-side connection
- 33

DIN ISO-9409 bolt circle
- 73

Fit for centering pins
- 78

Fit for centering
- 90

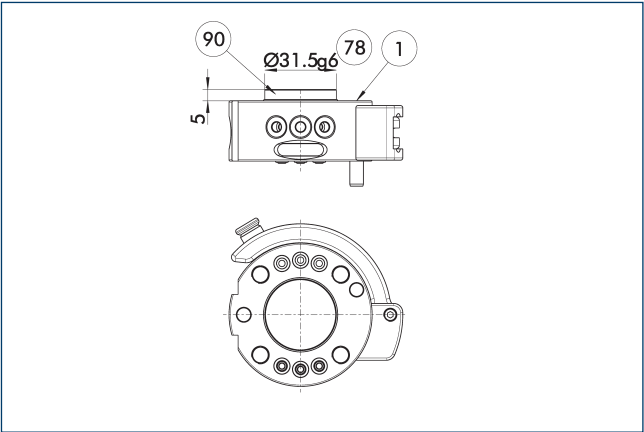
Connections for radial air feed-through

Robot side adapter plate

Description	ID	
Robot side		
A-SHK-050-P-RADIAL	1391557	

- 1 Adapter plate with radial air connections for using the integrated axial air connections of the SHK.

Centering disc for SHK



- 1

Robot-side connection
- 78

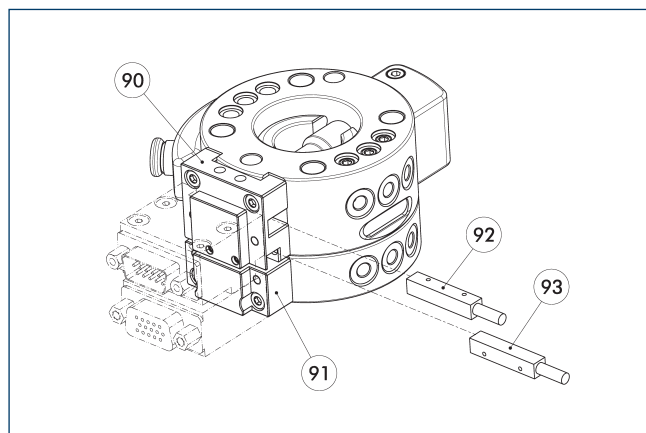
Fit for centering
- 90

Centring disc

Description	ID	
Centering disc		
A-HWK-050-BOSS	0302752	

- 1 Serves as a fitting collar for centering on mechanical interfaces, e. g. on the robot.

Accessories

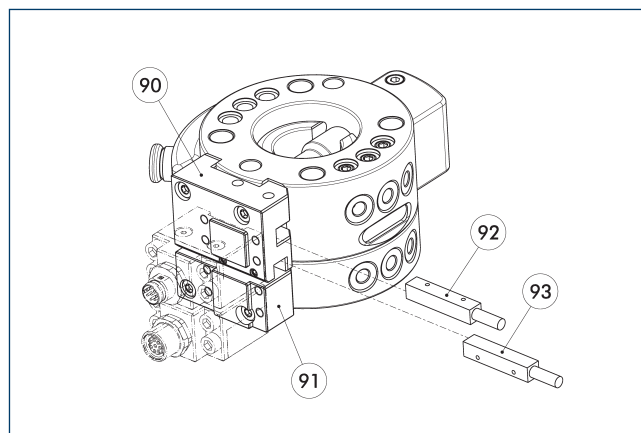


- 90 Robot side adapter plate 92 Locking sensor
 91 Tool side adapter plate 93 Tool side presence sensor

Description	ID	Description
Robot side		
SHK-050-AK0-S7	1304734	Adapter plate
Tool side		
SHA-050-AK0-S7	1304738	Adapter plate
Inductive proximity switches		
IN 5-S-M12	0301569	
IN 5-S-M8	0301469	
Signal feed-through module		
SW0-A15-A	9936356	
SW0-A15-K	9936357	
SW0-E10-011-A	9935802	
SW0-E10-011-K	9935801	
SW0-E20-011-A	9936526	
SW0-E20-011-K	9936525	
SW0-EM8-011-A	9966154	
SW0-EM8-011-K	9966153	

① A change system with adapter plate or feed-through module are optionally available, and can be ordered as a complete assembly group. Please contact us for assistance.

Accessories

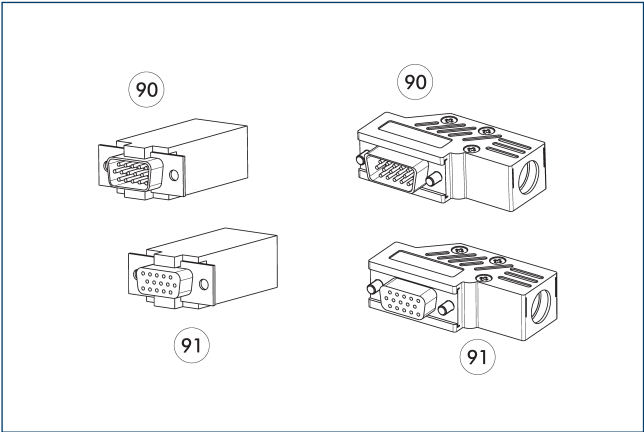


- 90 Robot side adapter plate 92 Locking sensor
 91 Tool side adapter plate 93 Tool side presence sensor

Description	ID	Description
Robot side		
SHK-050-AK0-S5	1304699	Adapter plate
Tool side		
SHA-050-AK0-S5	1304710	Adapter plate
Inductive proximity switches		
IN 5-S-M12	0301569	
IN 5-S-M8	0301469	
Signal feed-through module		
SW0-B15-A	9937327	
SW0-B15-K	9937326	
SW0-E10-005-A	9935800	
SW0-E10-005-K	9935799	
SW0-E2A-A	9941290	
SW0-E2A-K	9941289	
SW0-E3A-A	9941632	
SW0-E3A-K	9941631	
SW0-EM8-005-A	9966151	
SW0-EM8-005-K	9966150	

① A change system with adapter plate or feed-through module are optionally available, and can be ordered as a complete assembly group. Please contact us for assistance.

Cable connector



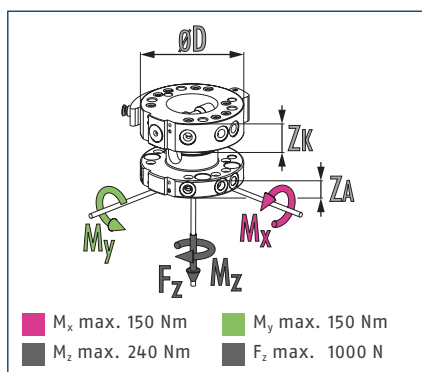
90 D-sub connecting plug

91 D-sub connector

Description	ID	
Angled cable connector, robot-side		
KAS-A15-K-90	0301301	
Angled cable connector, tool-side		
KAS-A15-A-90	0301302	
Straight cable connector, robot-side		
KAS-A15-K-0	0301264	
Straight cable connector, tool-side		
KAS-A15-A-0	0301265	

❗ For more detailed information and other cable connectors, see catalog chapter "Options" or visit our website.

Dimensions and maximum loads



① This is the max. sum of all forces and moments which are permitted to act on the change system for ensuring proper functioning.

Technical data

Description		SHK-063-000-000	SHA-063-000-000
		Manual change head	Manual change adapter
ID		0310420	0310421
Recommended handling weight	[kg]	18	18
Lock sensing		optionally via attachment kit	
Repeat accuracy	[mm]	0.02	0.02
Weight	[kg]	0.41	0.2
Max. distance when locking	[mm]	1	1
Number of pneumatic feed-throughs		6	6
Feed-throughs for radial use		3	6
Pitch circle diameter	[mm]	63	63
Connection flange according to		ISO 9409-1-63-4-M6	
Min./max. ambient temperature	[°C]	5/60	5/60
Dimensions Ø D x Z*	[mm]	80 x 28.5	80 x 18
Screw connection diagram		K over adapter plate	K over adapter plate

* Please note that the heights of the change master (ZK) and change adapter (ZA) differ. The sum represents the total height of a coupled change system.

Technical drawing of the SHK 63 and SHA 63 valves, showing front, side, and detail views with dimensions and part numbers.

Front View (Left): Dimensions include 25 (M6/6.5 (6x)), 22.5°, 37, 31.5±0.02, 78 (Ø40/5), 18, 4x90°, 33 (Ø63), 22.5°, 22.5°, 14.2±0.02, 32±0.02, 73 (Ø6 (2x)), and 2 (Ø60).

Side View (Middle): Dimensions include 25 (G1/8" / 6 (6x)), 28.5, 6.8, 18, 6.8, 11 (Ø11 (4x)), 23, 80 (Ø80), 23, 6, 8, 14, 3.5, 9.5, 46.5, 14, 4.5, 0, 19 (M3/6.5 (2x)), 73 (Ø3/4 (2x)), and 19 (M3/6.5 (2x)).

Front View (Right): Dimensions include 25 (M6/6 (6x)), 22.5°, 37, 78 (Ø40/3), 18, 4x90°, 33 (Ø63), 22.5°, 22.5°, 52.5, 73 (Ø6/6), 19 (M3/6.5 (2x)), 73 (Ø3/4 (2x)), 19 (M3/6.5 (2x)), and 1 (Ø60).

Detail View (Bottom Left): Dimensions include 9, 1, 2, 3.

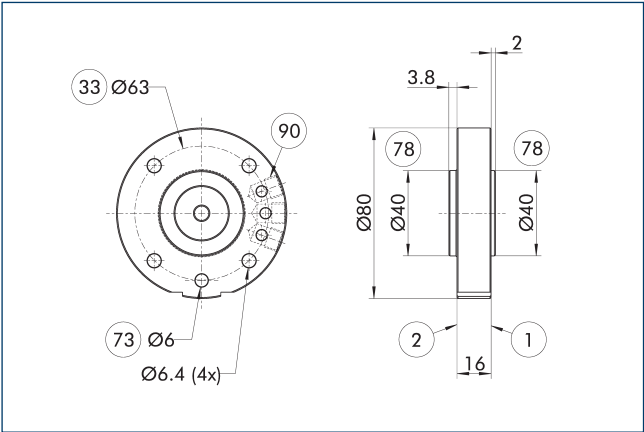
Detail View (Bottom Right): Dimensions include 26, 2, 12.5, 3, 2, 1.

① Robot-side connection	③③ DIN ISO-9409 bolt circle
② Tool-side connection	⑦③ Fit for centering pins
①⑨ Mounting surface for options	⑦⑧ Fit for centering
②⑤ Pneumatic feed-throughs	

[illegible]

The changing system has pneumatic feed-throughs. They can be used hose-free via the adapter plate (axial) or with a hose (radial). Some of the feed-throughs can be used axially.

Adapter plate ISO-A063-P-radial



- ① Robot-side connection

② Tool-side connection

③③ DIN ISO-9409 bolt circle
- ⑦③ Fit for centering pins

⑦⑧ Fit for centering

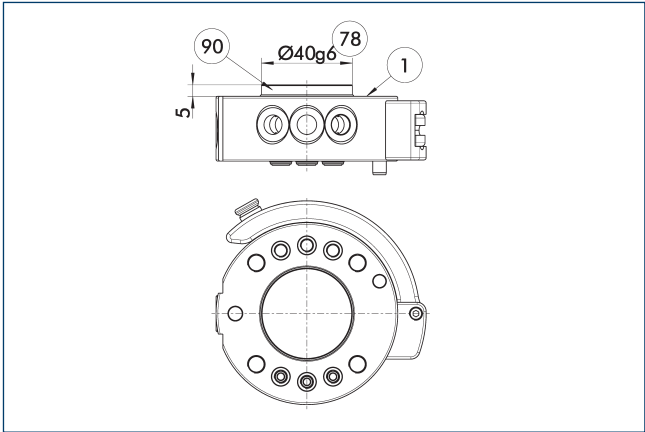
⑨① Connections for radial air feed-through

Robot side adapter plate

Description	ID	
Robot side		
A-SHK-063-P-RADIAL	1391562	

- ① Adapter plate with radial air connections for using the integrated axial air connections of the SHK.

Centering disc for SHK



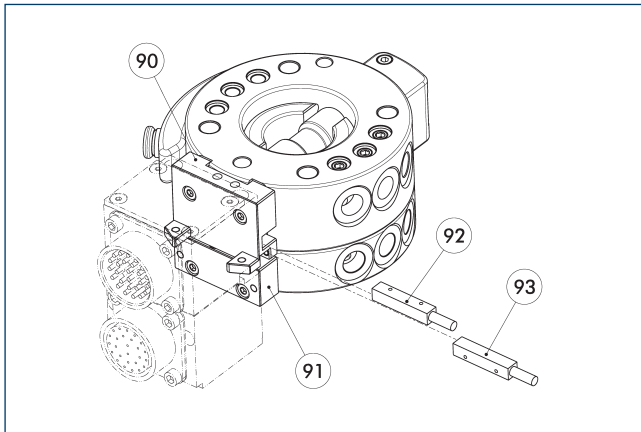
- ① Robot-side connection

⑦⑧ Fit for centering
- ⑨① Centring disc

Description	ID	
Centering disc		
A-HWK-063-BOSS	0302765	

- ① Serves as a fitting collar for centering on mechanical interfaces, e. g. on the robot.

Accessories

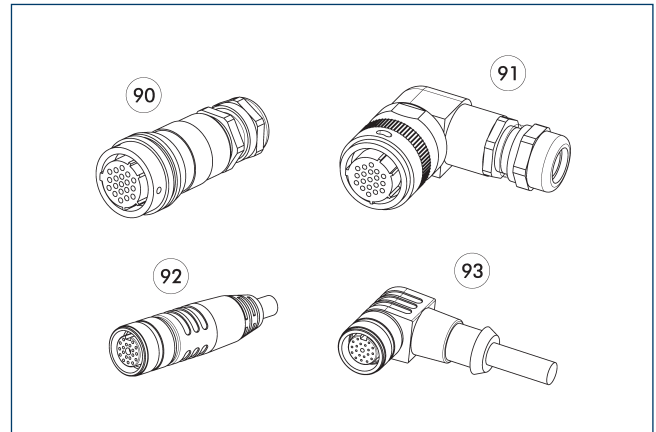


- 90 Robot side adapter plate
 91 Tool side adapter plate
 92 Locking sensor
 93 Tool side presence sensor

Description	ID	Description
Robot side		
SHK-063-AK0-K	1304742	Adapter plate
Tool side		
SHA-063-AK0-K	1304745	Adapter plate
Inductive proximity switches		
IN 5-S-M12	0301569	
IN 5-S-M8	0301469	
Signal feed-through module		
SW0-K10-A	9960543	
SW0-K12-A	9948702	
SW0-K12-K	9948701	
SW0-K14-A	9954959	
SW0-K19-A	9937329	
SW0-K19-K	9937328	
SW0-K19P-K	9949315	
SW0-K19W-K	9949316	
SW0-K21-A	9958100	
SW0-K26-A	9937799	
SW0-K26-K	9937798	
SW0-K26P-K	1301550	
SW0-KE7-A	9960994	
SW0-KE7-K	9960993	
SW0-KF10-A	9961308	
SW0-KF14-A	9961307	
SW0-KF19-A	9959887	
SW0-KF19-K	9959886	
SW0-KF19P-K	9872377	
SW0-KF6-A	9965144	
SW0-KF6-K	9965143	
SW0-KG19-A	9950144	
SW0-KG19-K	9950140	
SW0-KM14-A	9941480	
SW0-KM14-K	9940812	

① A change system with adapter plate or feed-through module are optionally available, and can be ordered as a complete assembly group. Please contact us for assistance.

Cable connector/cable extension



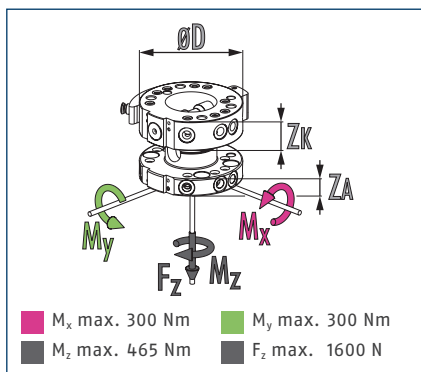
- 90 Connection plug / socket straight
 91 Connection plug / socket at an angle
 92 Connection plug / socket straight with extension cable
 93 Connection plug / socket at an angle with extension cable

Other cable lengths on request.

Description	ID	Length [m]
Angled cable connector, robot-side		
KAS-19B-K-90-C	0301294	
Angled cable connector, tool-side		
KAS-19B-A-90-C	0301295	
Angled cable connector with cable, robot-side		
KV-10-SWK-19F-90	0302173	10
KV-3-SWK-19B-90	0302179	3
KV-3-SWK-26B-90	0302185	3
KV-5-SWK19B-90	0302190	5
KV-5-SWK-19F-90	0302172	5
KV-5-SWK-26B-90	0302186	5
Angled cable connector with cable, tool-side		
KV-3-SWA-19B-90	0302191	3
KV-3-SWA-19F-90	0302175	3
KV-3-SWA-26B-90	0302187	3
Straight cable connector, robot-side		
KAS-19B-K-0-C	0301283	
Straight cable connector, tool-side		
KAS-19B-A-0-C	0301284	
Straight cable connector with cable, robot-side		
KV-10-SWK-19F-0	0302171	10
KV-3-SWK-19B-0	0302176	3
KV-3-SWK-26B-0	0302192	3
KV-5-SWK-19B-0	0302177	5
KV-5-SWK-19F-0	0302170	5
KV-5-SWK-26B-0	0302193	5
Straight cable connector with cable, tool-side		
KV-3-SWA-19B-0	0302178	3
KV-3-SWA-19F-0	0302174	3
KV-3-SWA-26B-0	0302184	3

① For more detailed information and other cable connectors, see catalog chapter "Options" or visit our website.

Dimensions and maximum loads



ⓘ This is the max. sum of all forces and moments which are permitted to act on the change system for ensuring proper functioning.

Technical data

Description		SHK-080-000-000	SHA-080-000-000
		Manual change head	Manual change adapter
ID		0310430	0310431
Recommended handling weight	[kg]	36	36
Lock sensing		optionally via attachment kit	
Repeat accuracy	[mm]	0.02	0.02
Weight	[kg]	0.74	0.35
Max. distance when locking	[mm]	1	1
Number of pneumatic feed-throughs		9	9
Feed-throughs for radial use		4	9
Pitch circle diameter	[mm]	80	80
Connection flange according to		ISO 9409-1-80-6-M8	
Min./max. ambient temperature	[°C]	5/60	5/60
Dimensions Ø D x Z*	[mm]	100 x 30	100 x 18
Screw connection diagram		K over adapter plate	K over adapter plate

* Please note that the heights of the change master (ZK) and change adapter (ZA) differ. The sum represents the total height of a coupled change system.

The technical drawing illustrates the SHK 80 / SHA 80 valve assembly through three primary views: front view (left), side view (center), and rear view (right). The front view shows a circular flange with a central bore of Ø65.6 and an outer diameter of Ø80. It features nine M6/7 mounting holes arranged in a circle with a pitch of 32.5±0.02. The side view provides longitudinal dimensions, including a total length of 100 and various internal clearances and offsets. The rear view mirrors the front view's circular geometry, highlighting the opposite set of mounting holes and the central shaft connection.

Key Dimensions and Specifications:

- Flange Diameter:** Ø80
- Bore Diameter:** Ø65.6
- Mounting Holes:** 9x M6/7 (Pitch: 32.5±0.02)
- Central Bore:** Ø50/6
- Internal Threads:** M10/12 (4x), M3/6 (2x), Ø3/5 (2x)
- Material/Grade:** "Y" SHA 80, "X" SHK 80
- Surface Finish:** Ra 1.6

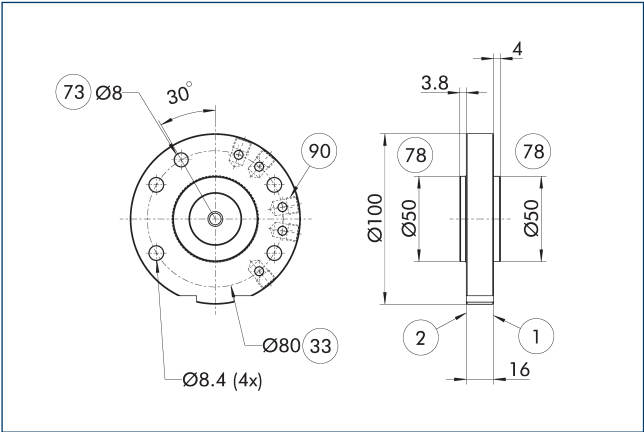
Part Numbers and Callouts:

- (2) Flange Gasket
- (33) Flange Nut
- (25) Mounting Bolt
- (73) Seal Ring
- (19) Internal Plug
- (78) O-ring
- (1) Shaft Seal

① Robot-side connection	③③ DIN ISO-9409 bolt circle
② Tool-side connection	⑦③ Fit for centering pins
①⑨ Mounting surface for options	⑦⑧ Fit for centering
②⑤ Pneumatic feed-throughs	

The changing system has pneumatic feed-throughs. They can be used hose-free via the adapter plate (axial) or with a hose (radial). Some of the feed-throughs can be used axially.

Adapter plate ISO-A080-P-radial



- ① Robot-side connection

② Tool-side connection

③③ DIN ISO-9409 bolt circle
- ⑦③ Fit for centering pins

⑦⑧ Fit for centering

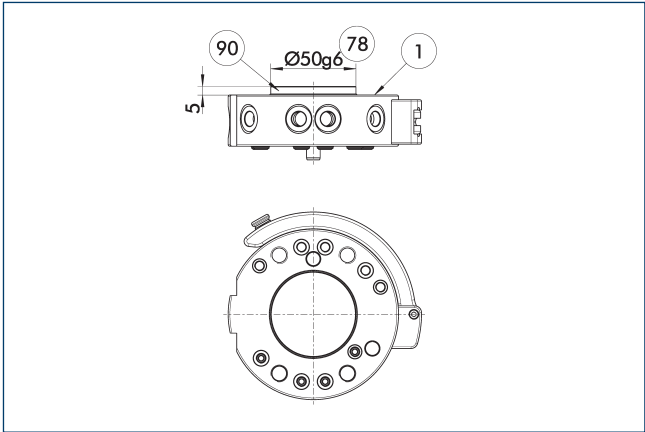
⑨⑨ Connections for radial air feed-through

Robot side adapter plate

Description	ID	
Robot side		
A-SHK-080-P-RADIAL	1391564	

- ① Adapter plate with radial air connections for using the integrated axial air connections of the SHK.

Centering disc for SHK



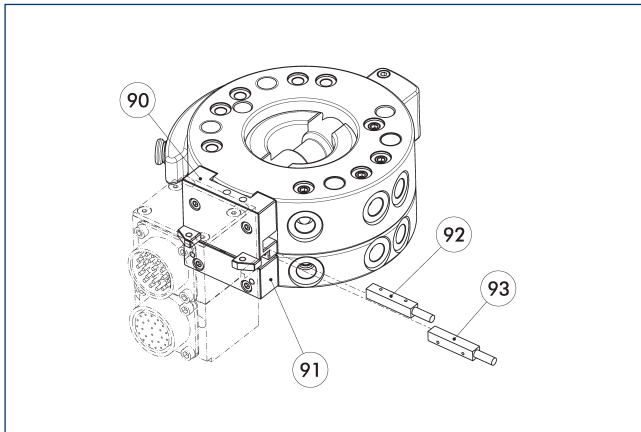
- ① Robot-side connection

⑦⑧ Fit for centering
- ⑨⑨ Centring disc

Description	ID	
Centering disc		
A-HWK-080-BOSS	0302782	

- ① Serves as a fitting collar for centering on mechanical interfaces, e. g. on the robot.

Accessories

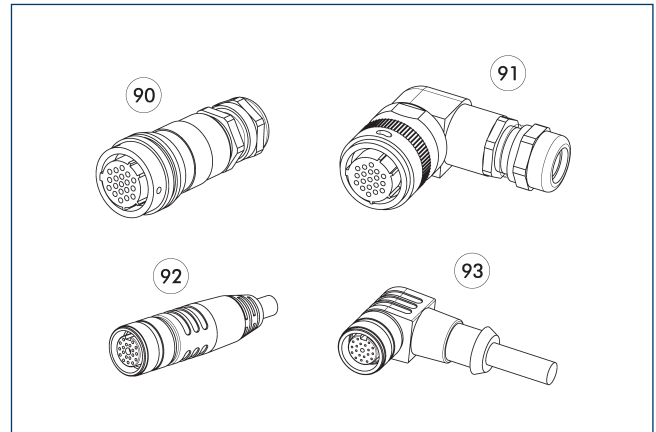


- 90 Robot side adapter plate
 91 Tool side adapter plate
 92 Locking sensor
 93 Tool side presence sensor

Description	ID	Description
Robot side		
SHK-080-AK0-K	1304759	Adapter plate
Tool side		
SHA-080-AK0-K	1304762	Adapter plate
Inductive proximity switches		
IN 5-S-M12	0301569	
IN 5-S-M8	0301469	
Signal feed-through module		
SW0-K10-A	9960543	
SW0-K12-A	9948702	
SW0-K12-K	9948701	
SW0-K14-A	9954959	
SW0-K19-A	9937329	
SW0-K19-K	9937328	
SW0-K19P-K	9949315	
SW0-K19W-K	9949316	
SW0-K21-A	9958100	
SW0-K26-A	9937799	
SW0-K26-K	9937798	
SW0-K26P-K	1301550	
SW0-KE7-A	9960994	
SW0-KE7-K	9960993	
SW0-KF10-A	9961308	
SW0-KF14-A	9961307	
SW0-KF19-A	9959887	
SW0-KF19-K	9959886	
SW0-KF19P-K	9872377	
SW0-KF6-A	9965144	
SW0-KF6-K	9965143	
SW0-KG19-A	9950144	
SW0-KG19-K	9950140	
SW0-KM14-A	9941480	
SW0-KM14-K	9940812	

① A change system with adapter plate or feed-through module are optionally available, and can be ordered as a complete assembly group. Please contact us for assistance.

Cable connector/cable extension



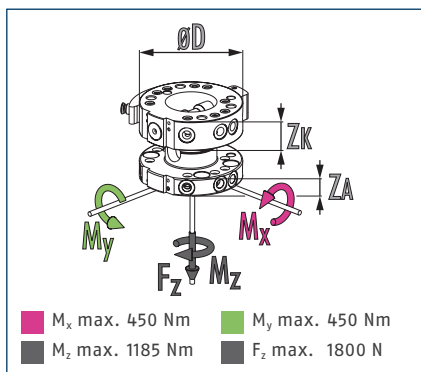
- 90 Connection plug / socket straight
 91 Connection plug / socket at an angle
 92 Connection plug / socket straight with extension cable
 93 Connection plug / socket at an angle with extension cable

Other cable lengths on request.

Description	ID	Length
		[m]
Angled cable connector, robot-side		
KAS-19B-K-90-C	0301294	
Angled cable connector, tool-side		
KAS-19B-A-90-C	0301295	
Angled cable connector with cable, robot-side		
KV-10-SWK-19F-90	0302173	10
KV-3-SWK-26B-90	0302185	3
KV-5-SWK-19F-90	0302172	5
KV-5-SWK-26B-90	0302186	5
Angled cable connector with cable, tool-side		
KV-3-SWA-19F-90	0302175	3
KV-3-SWA-26B-90	0302187	3
Straight cable connector, robot-side		
KAS-19B-K-0-C	0301283	
Straight cable connector, tool-side		
KAS-19B-A-0-C	0301284	
Straight cable connector with cable, robot-side		
KV-10-SWK-19F-0	0302171	10
KV-3-SWK-26B-0	0302192	3
KV-5-SWK-19F-0	0302170	5
KV-5-SWK-26B-0	0302193	5
Straight cable connector with cable, tool-side		
KV-3-SWA-19F-0	0302174	3
KV-3-SWA-26B-0	0302184	3

① For more detailed information and other cable connectors, see catalog chapter "Options" or visit our website.

Dimensions and maximum loads



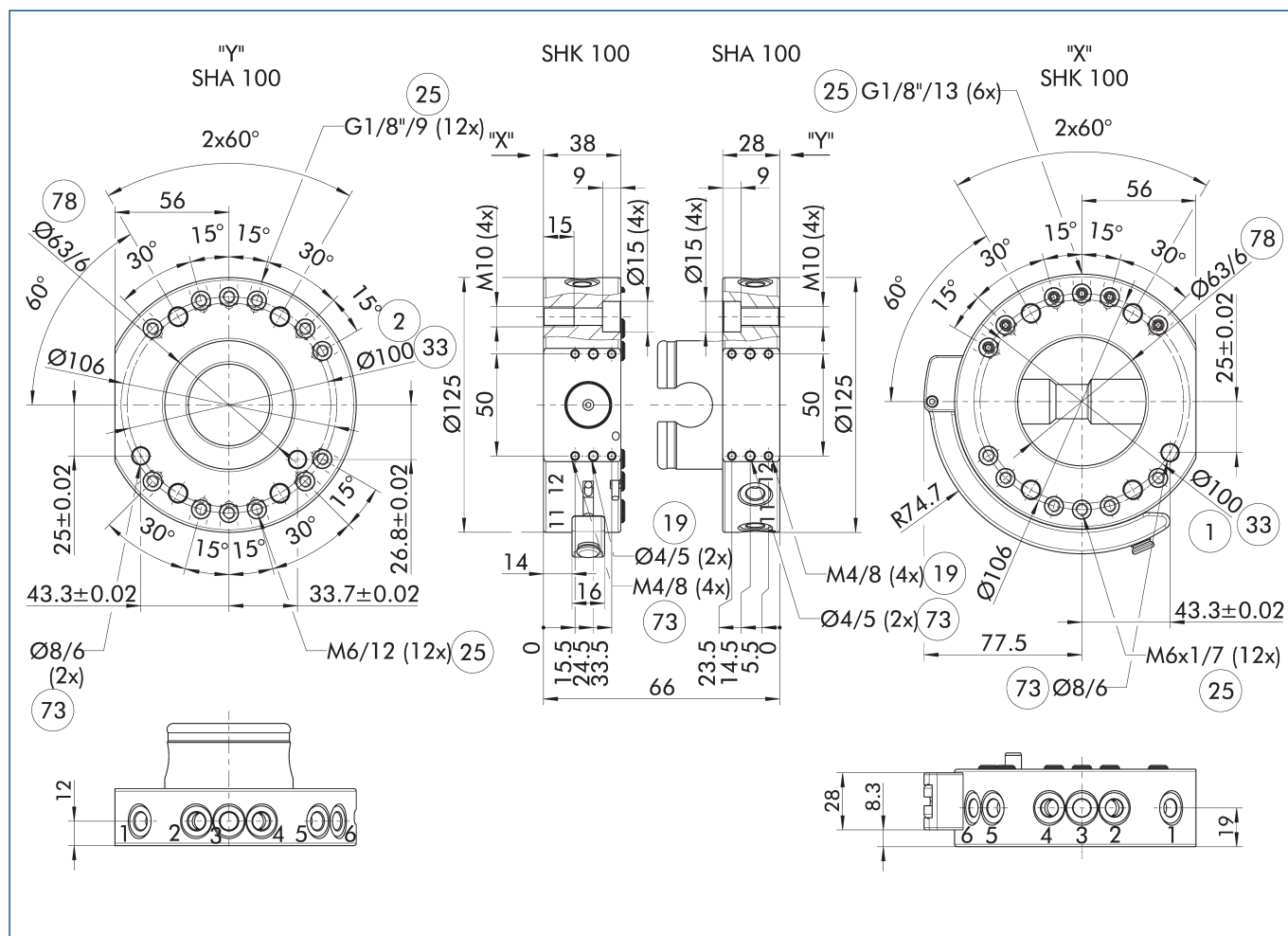
ⓘ This is the max. sum of all forces and moments which are permitted to act on the change system for ensuring proper functioning.

Technical data

Description		SHK-100-000-000	SHA-100-000-000
		Manual change head	Manual change adapter
ID		0310440	0310441
Recommended handling weight	[kg]	43	43
Lock sensing		optional	
Repeat accuracy	[mm]	0.02	0.02
Weight	[kg]	1.3	0.55
Max. distance when locking	[mm]	1	1
Number of pneumatic feed-throughs		12	12
Feed-throughs for radial use		6	12
Pitch circle diameter	[mm]	100	100
Connection flange according to		ISO 9409-1-100-6-M8	
Min./max. ambient temperature	[°C]	5/60	5/60
Dimensions Ø D x Z*	[mm]	125 x 38	125 x 28
Screw connection diagram		J	J

* Please note that the heights of the change master (ZK) and change adapter (ZA) differ. The sum represents the total height of a coupled change system.

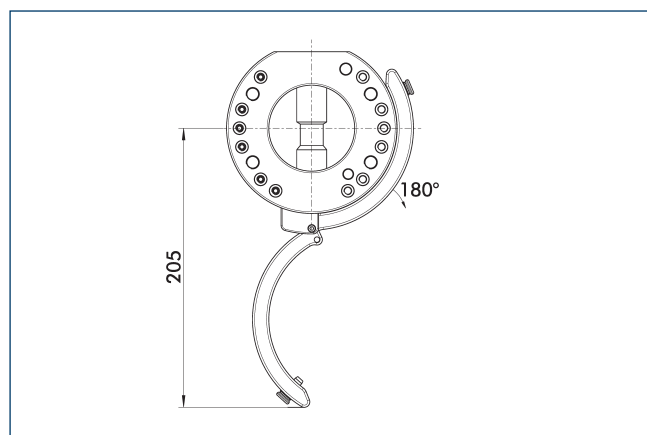
Main view



The main view shows the unit in its basic version.

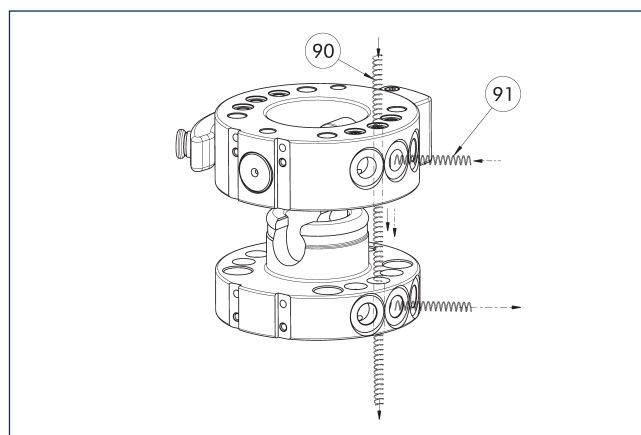
- | | |
|---------------------------------|-----------------------------|
| ① Robot-side connection | ③③ DIN ISO-9409 bolt circle |
| ② Tool-side connection | ⑦③ Fit for centering pins |
| ①⑨ Mounting surface for options | ⑦⑧ Fit for centering |
| ②⑤ Pneumatic feed-throughs | |

Interference Contour when locking/unlocking



The drawing shows the interfering contour when locking and unlocking. The specified values may vary depending on the opening angle of the locking lever.

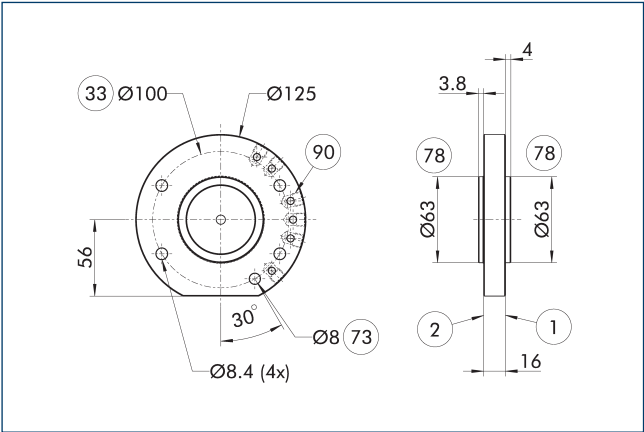
Pneumatic feed-through



- | | |
|-----------------------|------------------------|
| ⑨⑨ Feed-through axial | ⑨① Feed-through radial |
|-----------------------|------------------------|

The changing system has pneumatic feed-throughs. They can be used hose-free via the adapter plate (axial) or with a hose (radial). Some of the feed-throughs can be used axially.

Adapter plate ISO-A100-P-radial



- 1

Robot-side connection
- 2

Tool-side connection
- 33

DIN ISO-9409 bolt circle
- 73

Fit for centering pins
- 78

Fit for centering
- 90

Connections for radial air feed-through

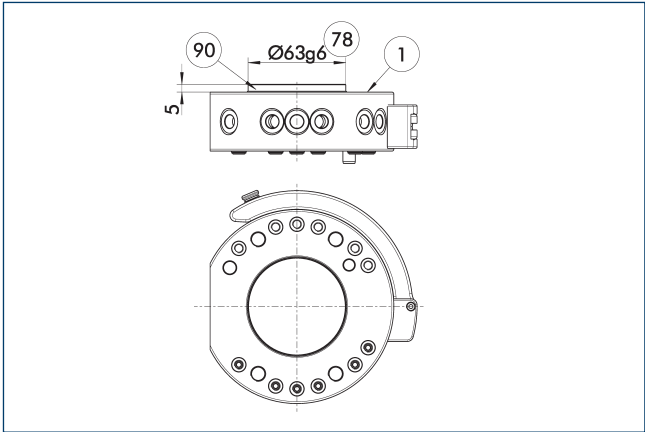
Robot side adapter plate

Description	ID
Robot side	
A-SHK-100-P-RADIAL	1391567

1

 Adapter plate with radial air connections for using the integrated axial air connections of the SHK.

Centering disc for SHK



- 1

Robot-side connection
- 78

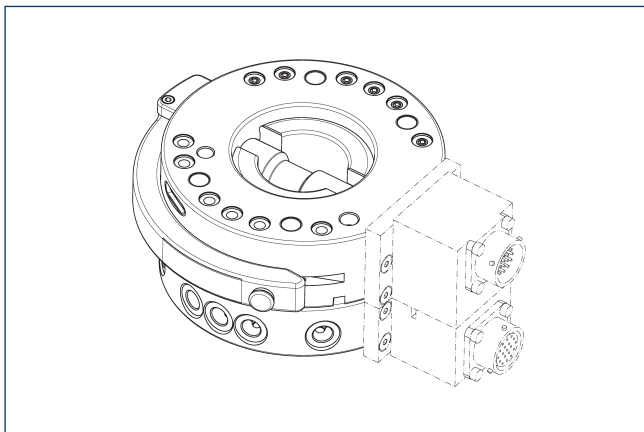
Fit for centering

Description	ID
Centering disc	
A-HWK-100-BOSS	0302802

1

 Serves as a fitting collar for centering on mechanical interfaces, e. g. on the robot.

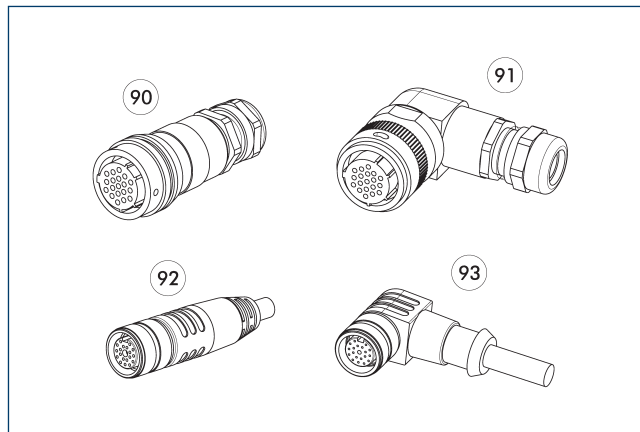
Electric feed-through module



Description	ID	No. Pins
Signal feed-through module		
SW0-G19-A	9940650	19
SW0-G19-K	9940649	19
SW0-MT8-A	9937158	
SW0-MT8-K	9937157	
SW0-R19-A	9935816	19
SW0-R19-K	9935815	19
SW0-R26-A	9935820	26
SW0-R26-K	9935819	26
SW0-R32-A	9941388	32
SW0-R32-K	9941387	32
SW0-RE5-A	9957445	
SW0-RE5-K	9957444	
SW0-RF19-A	9948657	19
SW0-RF19-K	9948654	19

① A change system with adapter plate or feed-through module are optionally available, and can be ordered as a complete assembly group. Please contact us for assistance.

Cable connector/cable extension



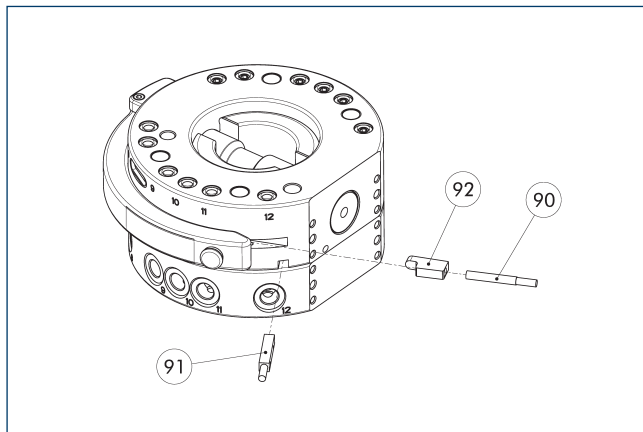
- ⑨⑩ Connection plug / socket straight
 ⑨⑪ Connection plug / socket at an angle
 ⑨⑫ Connection plug / socket straight with extension cable
 ⑨⑬ Connection plug / socket at an angle with extension cable

Other cable lengths on request.

Description	ID	Length
		[m]
Angled cable connector, robot-side		
KAS-19B-K-90-C	0301294	
Angled cable connector, tool-side		
KAS-19B-A-90-C	0301295	
Angled cable connector with cable, robot-side		
KV-10-SWK-19F-90	0302173	10
KV-3-SWK-19B-90	0302179	3
KV-5-SWK-19B-90	0302190	5
KV-5-SWK-19F-90	0302172	5
Angled cable connector with cable, tool-side		
KV-3-SWA-19B-90	0302191	3
KV-3-SWA-19F-90	0302175	3
Straight cable connector, robot-side		
KAS-19B-K-0-C	0301283	
Straight cable connector, tool-side		
KAS-19B-A-0-C	0301284	
Straight cable connector with cable, robot-side		
KV-10-SWK-19F-0	0302171	10
KV-3-SWK-19B-0	0302176	3
KV-5-SWK-19B-0	0302177	5
KV-5-SWK-19F-0	0302170	5
Straight cable connector with cable, tool-side		
KV-3-SWA-19B-0	0302178	3
KV-3-SWA-19F-0	0302174	3

① For more detailed information and other cable connectors, see catalog chapter "Options" or visit our website.

Monitoring via inductive proximity switches

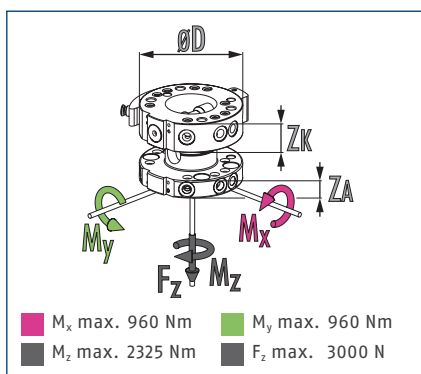


- 90 Locking sensor IN 40-S-...
 91 Workpiece presence sensor IN 5-S-...
 92 A sensor bracket is included in the scope of delivery

Description	ID	Often combined
Inductive proximity switches		
IN 40-S-M12	0301574	
IN 40-S-M8	0301474	
IN 5-S-M12	0301569	
IN 5-S-M8	0301469	
Cable extension		
KV BG12-SG12 3P-0030-PNP	0301999	
KV BG12-SG12 3P-0060-PNP	0301998	
KV BW08-SG08 3P-0030-PNP	0301495	
KV BW08-SG08 3P-0100-PNP	0301496	
KV BW08-SG08 3P-0200-PNP	0301497	●
KV BW12-SG12 3P-0030-PNP	0301595	
KV BW12-SG12 3P-0100-PNP	0301596	
KV BW12-SG12 3P-0200-PNP	0301597	
clip for plug/socket		
CLI-M12	0301464	
CLI-M8	0301463	
Connection cables		
KA BG08-L 3P-0300-PNP	0301622	●
KA BG08-L 3P-0500-PNP	0301623	
KA BG12-L 3P-0500-PNP	30016369	
KA BW08-L 3P-0300-PNP	0301594	
KA BW08-L 3P-0500-PNP	0301502	
KA BW12-L 3P-0300-PNP	0301503	
KA BW12-L 3P-0500-PNP	0301507	
Sensor distributor		
V2-M12	0301776	●
V2-M8	0301775	●
V4-M12	0301747	
V4-M8	0301746	
V8-M12	0301752	
V8-M8	0301751	

- ⓘ For more detailed information and other cable extensions, see catalog chapter "Accessories" or visit our website.

Dimensions and maximum loads



ⓘ This is the max. sum of all forces and moments which are permitted to act on the change system for ensuring proper functioning.

Technical data

Description		SHK-125-000-000	SHA-125-000-000
		Manual change head	Manual change adapter
ID		0310450	0310451
Recommended handling weight	[kg]	58	58
Lock sensing		optional	
Repeat accuracy	[mm]	0.02	0.02
Weight	[kg]	2.8	1.2
Max. distance when locking	[mm]	1	1
Number of pneumatic feed-throughs		12	12
Feed-throughs for radial use		6	12
Pitch circle diameter	[mm]	125	125
Connection flange according to		ISO 9409-1-125-6-M10	
Min./max. ambient temperature	[°C]	5/60	5/60
Dimensions Ø D x Z*	[mm]	160 x 50	160 x 28
Screw connection diagram		J	J

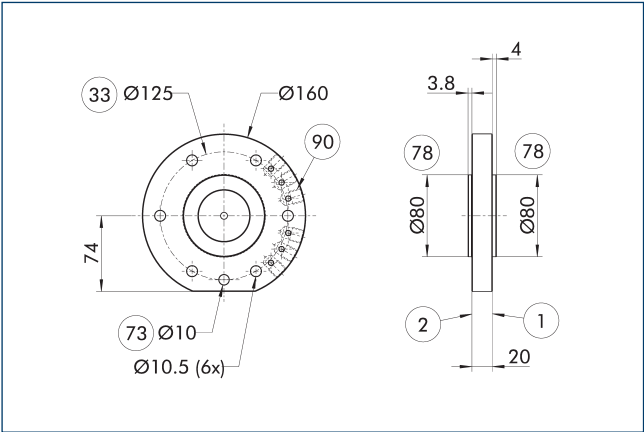
* Please note that the heights of the change master (ZK) and change adapter (ZA) differ. The sum represents the total height of a coupled change system.

① Robot-side connection	③③ DIN ISO-9409 bolt circle
② Tool-side connection	⑦③ Fit for centering pins
①⑨ Mounting surface for options	⑦⑧ Fit for centering
②⑤ Pneumatic feed-throughs	

[illegible]

The changing system has pneumatic feed-throughs. They can be used hose-free via the adapter plate (axial) or with a hose (radial). Some of the feed-throughs can be used axially.

Adapter plate ISO-A125-P-radial



- 1

Robot-side connection
- 2

Tool-side connection
- 33

DIN ISO-9409 bolt circle
- 73

Fit for centering pins
- 78

Fit for centering
- 90

Connections for radial air feed-through

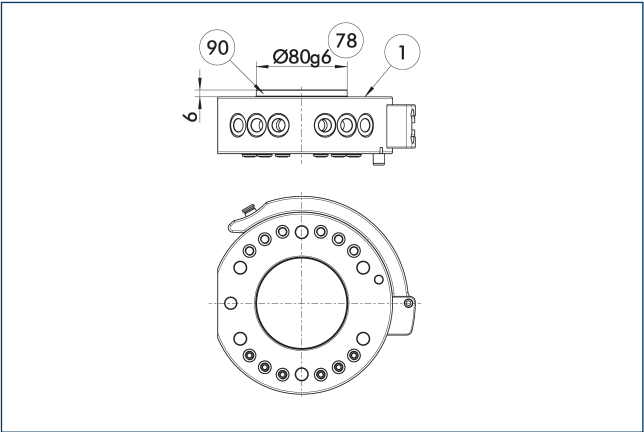
Robot side adapter plate

Description	ID
Robot side	
A-SHK-125-P-RADIAL	1391576

1

 Adapter plate with radial air connections for using the integrated axial air connections of the SHK.

Centering disc for SHK



- 1

Robot-side connection
- 78

Fit for centering
- 90

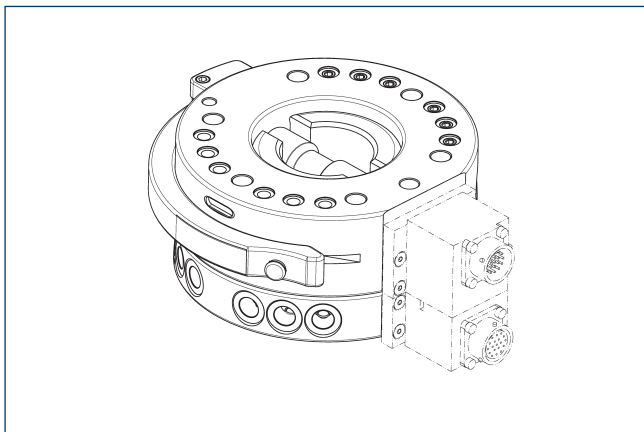
Centring disc

Description	ID
Centering disc	
A-HWK-125-BOSS	0302827

1

 Serves as a fitting collar for centering on mechanical interfaces, e. g. on the robot.

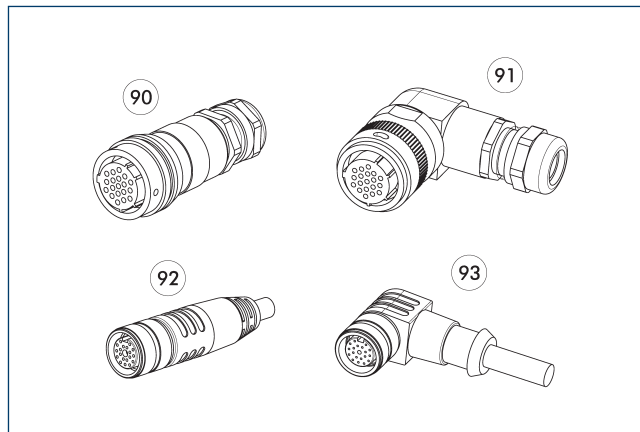
Electric feed-through module



Description	ID	No. Pins
Signal feed-through module		
SW0-G19-A	9940650	19
SW0-G19-K	9940649	19
SW0-MT8-A	9937158	
SW0-MT8-K	9937157	
SW0-R19-A	9935816	19
SW0-R19-K	9935815	19
SW0-R26-A	9935820	26
SW0-R26-K	9935819	26
SW0-R32-A	9941388	32
SW0-R32-K	9941387	32
SW0-RE5-A	9957445	
SW0-RE5-K	9957444	
SW0-RF19-A	9948657	19
SW0-RF19-K	9948654	19

① A change system with adapter plate or feed-through module are optionally available, and can be ordered as a complete assembly group. Please contact us for assistance.

Cable connector/cable extension



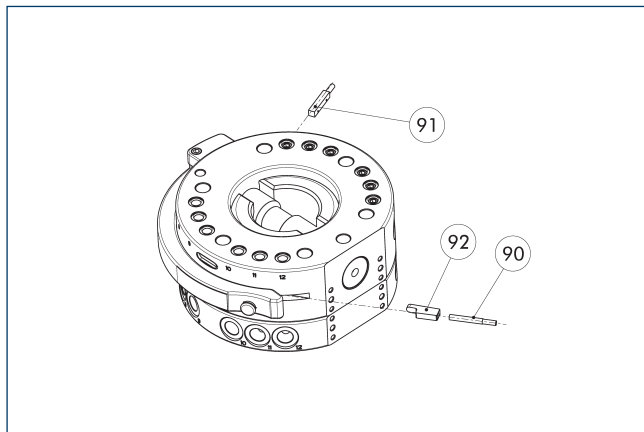
- ⑨⑩ Connection plug / socket straight
- ⑨① Connection plug / socket at an angle
- ⑨② Connection plug / socket straight with extension cable
- ⑨③ Connection plug / socket at an angle with extension cable

Other cable lengths on request.

Description	ID	Length
		[m]
Angled cable connector, robot-side		
KAS-19B-K-90-C	0301294	
Angled cable connector, tool-side		
KAS-19B-A-90-C	0301295	
Angled cable connector with cable, robot-side		
KV-10-SWK-19F-90	0302173	10
KV-3-SWK-19B-90	0302179	3
KV-5-SWK-19B-90	0302190	5
KV-5-SWK-19F-90	0302172	5
Angled cable connector with cable, tool-side		
KV-3-SWA-19B-90	0302191	3
KV-3-SWA-19F-90	0302175	3
Straight cable connector, robot-side		
KAS-19B-K-0-C	0301283	
Straight cable connector, tool-side		
KAS-19B-A-0-C	0301284	
Straight cable connector with cable, robot-side		
KV-10-SWK-19F-0	0302171	10
KV-3-SWK-19B-0	0302176	3
KV-5-SWK-19B-0	0302177	5
KV-5-SWK-19F-0	0302170	5
Straight cable connector with cable, tool-side		
KV-3-SWA-19B-0	0302178	3
KV-3-SWA-19F-0	0302174	3

① For more detailed information and other cable connectors, see catalog chapter "Options" or visit our website.

Monitoring via inductive proximity switches



- 90 Locking sensor IN 40-S-...
 91 Workpiece presence sensor IN 5-S-...
 92 A sensor bracket is included in the scope of delivery

Description	ID	Often combined
Inductive proximity switches		
IN 40-S-M12	0301574	
IN 40-S-M8	0301474	
IN 5-S-M12	0301569	
IN 5-S-M8	0301469	
Cable extension		
KV BG12-SG12 3P-0030-PNP	0301999	
KV BG12-SG12 3P-0060-PNP	0301998	
KV BW08-SG08 3P-0030-PNP	0301495	
KV BW08-SG08 3P-0100-PNP	0301496	
KV BW08-SG08 3P-0200-PNP	0301497	●
KV BW12-SG12 3P-0030-PNP	0301595	
KV BW12-SG12 3P-0100-PNP	0301596	
KV BW12-SG12 3P-0200-PNP	0301597	
clip for plug/socket		
CLI-M12	0301464	
CLI-M8	0301463	
Connection cables		
KA BG08-L 3P-0300-PNP	0301622	●
KA BG08-L 3P-0500-PNP	0301623	
KA BG12-L 3P-0500-PNP	30016369	
KA BW08-L 3P-0300-PNP	0301594	
KA BW08-L 3P-0500-PNP	0301502	
KA BW12-L 3P-0300-PNP	0301503	
KA BW12-L 3P-0500-PNP	0301507	
Sensor distributor		
V2-M12	0301776	●
V2-M8	0301775	●
V4-M12	0301747	
V4-M8	0301746	
V8-M12	0301752	
V8-M8	0301751	

- ⓘ For more detailed information and other cable extensions, see catalog chapter "Accessories" or visit our website.

SCHUNK GmbH & Co. KG
Spann- und Greiftechnik

Bahnhofstr. 106 - 134
D-74348 Lauffen/Neckar
Tel. +49-7133-103-0
Fax +49-7133-103-2399
info@de.schunk.com
schunk.com

Follow us



J. Lehmann
Jens Lehmann, German goalkeeper legend, SCHUNK brand ambassador since 2012 for
safe, precise gripping and holding.
schunk.com/Lehmann